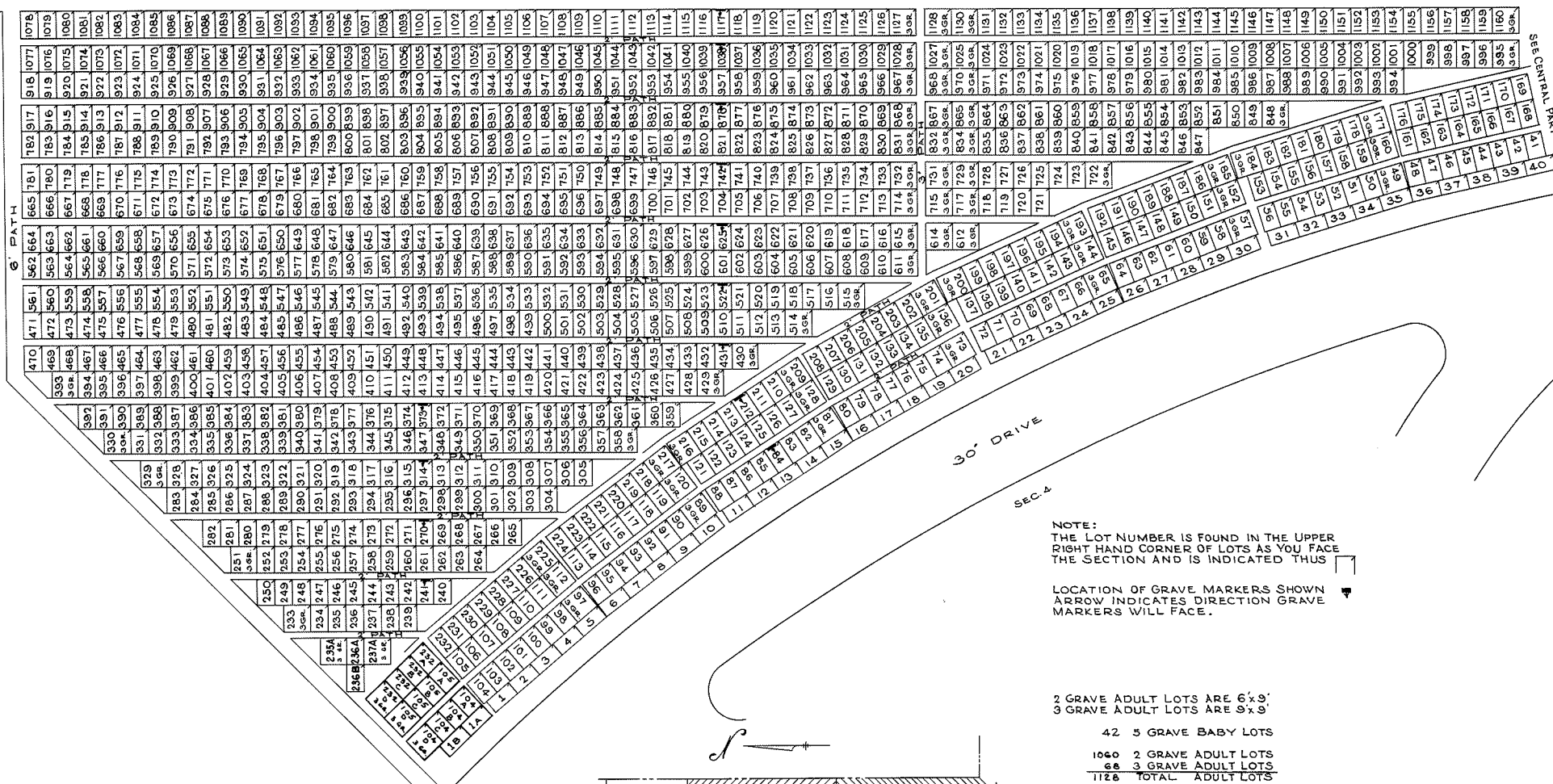


CEMETERY PROPERTY LINE



NOTE:  
THE LOT NUMBER IS FOUND IN THE UPPER  
RIGHT HAND CORNER OF LOTS AS YOU FACE  
THE SECTION AND IS INDICATED THUS

LOCATION OF GRAVE MARKERS SHOWN  
ARROW INDICATES DIRECTION GRAVE  
MARKERS WILL FACE.

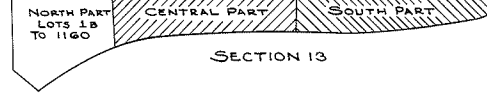
2 GRAVE ADULT LOTS ARE 6'x9'  
3 GRAVE ADULT LOTS ARE 9'x9'

42 5 GRAVE BABY LOTS

1060 2 GRAVE ADULT LOTS

68 3 GRAVE ADULT LOTS

1126 TOTAL ADULT LOTS



SECTION 13

**HOLY CROSS CEMETERY**  
CLEVELAND, OHIO  
**NORTH PART**  
**SECTION 13**

SCALE 1"=20' G.C.A. SEPT. 1961

Rev. 2-3-66

SEE CENTRAL PART

CEMETERY PROP. LINE

1256	1257	1258	1259	1260	1261	1262	1263	1264	1265	1266	1267	1268	1269	1270	1271	1272	1273	1274	1275	1276	1277	1278	1279	1280	1281	SHRINE	1651																																								
1255	1254	1243	1244	1245	1246	1247	1248	1249	1250	1251	1252	1253	1254	1255	1256	1257	1258	1259	1260	1261	1262	1263	1264	1265	1266	1267	1268	1269	1270	1271	1272	1273	1274	1275	1276	1277	1278	1279	1280	1281	1483																										
1241	1242	1238	1239	1240	1241	1242	1243	1244	1245	1246	1247	1248	1249	1250	1251	1252	1253	1254	1255	1256	1257	1258	1259	1260	1261	1262	1263	1264	1265	1266	1267	1268	1269	1270	1271	1272	1273	1274	1275	1276	1277	1278	1279	1280	1281	1483																					
1221	1222	1223	1224	1225	1226	1227	1228	1229	1230	1231	1232	1233	1234	1235	1236	1237	1238	1239	1240	1241	1242	1243	1244	1245	1246	1247	1248	1249	1250	1251	1252	1253	1254	1255	1256	1257	1258	1259	1260	1261	1262	1263	1264	1265	1266	1267	1268	1269	1270	1271	1272	1273	1274	1275	1276	1277	1278	1279	1280	1281	1483						
1220	1219	1218	1217	1216	1215	1214	1213	1212	1211	1210	1209	1208	1207	1206	1205	1204	1203	1202	1201	1200	1199	1198	1197	1196	1195	1194	1193	1192	1191	1190	1189	1188	1187	1186	1185	1184	1183	1182	1181	1180	1179	1178	1177	1176	1175	1174	1173	1172	1171	1170	1169	1168	1167	1166	1165	1164	1163	1162	1161	1483							
1200	1199	1198	1197	1196	1195	1194	1193	1192	1191	1190	1189	1188	1187	1186	1185	1184	1183	1182	1181	1180	1179	1178	1177	1176	1175	1174	1173	1172	1171	1170	1169	1168	1167	1166	1165	1164	1163	1162	1161	1483	1484	1485	1486	1487	1488	1489	1490	1491	1492	1493	1494	1495	1496	1497	1498	1499	1500	1501	1502	1503	1504	1505	1506	1507	1508	1509	1510

30' DRIVE

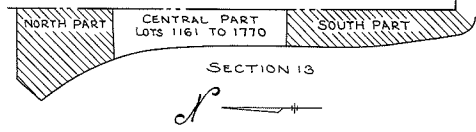
Sec. 12

CEMETERY PROP. LINE

1482	1707	1708	1709	1710	1711	1712	1713	1714	1715	1716	1717	1718	1719	1720	1721	1722	1723	1724	1725	1726	1727	1728	1729	1730	1731	1732	1733	1734	1735	1736	1737	1738	1739	1740	1741	1742	1743	1744	1745	1746	1747	1748	1749	1750	1751	1752	1753	1754	1755	1756	1757	1758	1759	1760	1761	1762	1763	1764	1765																																																																																																																																																																																																																																																																																																																												
1483	1706	1705	1704	1703	1702	1701	1700	1699	1698	1697	1696	1695	1694	1693	1692	1691	1690	1689	1688	1687	1686	1685	1684	1683	1682	1681	1680	1679	1678	1677	1676	1675	1674	1673	1672	1671	1670	1669	1668	1667	1666	1665	1664	1663	1662	1661	1660	1659	1658	1657	1656	1655	1654	1653	1652	1651	1483																																																																																																																																																																																																																																																																																																																														
1383	1650	1649	1648	1647	1646	1645	1644	1643	1642	1641	1640	1639	1638	1637	1636	1635	1634	1633	1632	1631	1630	1629	1628	1627	1626	1625	1624	1623	1622	1621	1620	1619	1618	1617	1616	1615	1614	1613	1612	1611	1610	1609	1608	1607	1606	1605	1604	1603	1602	1601	1600	1599	1598	1597	1596	1595	1594	1593	1592	1591	1590	1589	1588	1587	1586	1585	1584	1583	1582	1581	1580	1579	1578	1577	1576	1575	1574	1573	1572	1571	1570	1569	1568	1567																																																																																																																																																																																																																																																																																																			
1333	1534	1533	1532	1531	1530	1529	1528	1527	1526	1525	1524	1523	1522	1521	1520	1519	1518	1517	1516	1515	1514	1513	1512	1511	1510	1509	1508	1507	1506	1505	1504	1503	1502	1501	1500	1499	1498	1497	1496	1495	1494	1493	1492	1491	1490	1489	1488	1487	1486	1485	1484	1483	1482	1481	1480	1479	1478	1477	1476	1475	1474	1473	1472	1471	1470	1469	1468	1467	1466	1465	1464	1463	1462	1461	1460	1459	1458	1457	1456	1455	1454	1453	1452	1451	1450	1449	1448	1447	1446	1445	1444	1443	1442	1441	1440	1439	1438	1437	1436	1435	1434	1433	1432	1431	1430	1429	1428	1427	1426	1425	1424	1423	1422	1421	1420	1419	1418	1417	1416	1415	1414	1413	1412	1411	1410	1409	1408	1407	1406	1405	1404	1403	1402	1401	1400	1399	1398	1397	1396	1395	1394	1393	1392	1391	1390	1389	1388	1387	1386	1385	1384	1383	1382	1381	1380	1379	1378	1377	1376	1375	1374	1373	1372	1371	1370	1369	1368	1367	1366	1365	1364	1363	1362	1361	1360	1359	1358	1357	1356	1355	1354	1353	1352	1351	1350	1349	1348	1347	1346	1345	1344	1343	1342	1341	1340	1339	1338	1337	1336	1335	1334	1333	1332	1331	1330	1329	1328	1327	1326	1325	1324	1323	1322	1321	1320	1319	1318	1317	1316	1315	1314	1313	1312	1311	1310	1309	1308	1307	1306	1305	1304	1303	1302	1301	1300	1299	1298	1297	1296	1295	1294	1293	1292	1291	1290	1289	1288	1287	1286	1285	1284	1283	1282	1281	1280	1279	1278	1277	1276	1275	1274	1273	1272	1271	1270	1269	1268	1267	1266	1265	1264	1263	1262	1261	1260	1259	1258	1257	1256	1255	1254	1253	1252	1251	1250	1249	1248	1247	1246	1245	1244	1243	1242	1241	1240	1239	1238	1237	1236	1235	1234	1233	1232	1231	1230	1229	1228	1227	1226	1225	1224	1223	1222	1221	1220	1219	1218	1217	1216	1215	1214	1213	1212	1211	1210	1209	1208	1207	1206	1205	1204	1203	1202	1201	1200	1199	1198	1197	1196	1195	1194	1193	1192	1191	1190	1189	1188	1187	1186	1185	1184	1183	1182	1181	1180	1179	1178	1177	1176	1175	1174	1173	1172	1171	1170	1169	1168	1167	1166	1165	1164	1163	1162	1161	1483

30' DRIVE

Sec. 12



NOTE:  
THE LOT NUMBER IS FOUND IN THE UPPER  
RIGHT HAND CORNER OF LOTS AS YOU FACE  
THE SECTION AND IS INDICATED THUS. [Symbol]

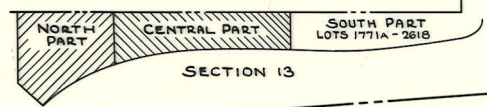
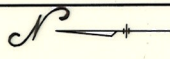
LOCATION OF GRAVE MARKERS SHOWN  
ARROW INDICATES DIRECTION GRAVE  
MARKERS WILL FACE.

LOTS 1161 TO 1770 INCL. ARE CONSEC.  
5 GR. BABY LOTS (10'x5')

CONSEC. BABY GRAVES ARE 24'x60'

**HOLY CROSS CEMETERY**  
CLEVELAND, OHIO  
**CENTRAL PART**  
**SECTION 13**  
SCALE 1"=20' G.C.A. SEPT. 1961





SECTION 13

CEMETERY PROP. LINE

SEE CENTRAL PART

1765	2160	2159	2158	2157	2156	2155	2154	2153	2152	2151	2150
1860	1859	1858	1857	1856	1855	1854	1853	1852	1851	1850	1849
1848	1847	1846	1845	1844	1843	1842	1841	1840	1839	1838	1837
1836	1835	1834	1833	1832	1831	1830	1829	1828	1827	1826	1825
1824	1823	1822	1821	1820	1819	1818	1817	1816	1815	1814	1813
1812	1811	1810	1809	1808	1807	1806	1805	1804	1803	1802	1801
1800	1799	1798	1797	1796	1795	1794	1793	1792	1791	1790	1789
1788	1787	1786	1785	1784	1783	1782	1781	1780	1779	1778	1777
1776	1775	1774	1773	1772	1771	1770	1769	1768	1767	1766	1765

30' DRIVE

CEMETERY PROP. LINE

30' DRIVE

1860	1859	1858	1857	1856	1855	1854	1853	1852	1851	1850	1849	1848	1847	1846	1845	1844	1843	1842	1841	1840	1839	1838	1837	1836	1835	1834	1833	1832	1831	1830	1829	1828	1827	1826	1825	1824	1823	1822	1821	1820	1819	1818	1817	1816	1815	1814	1813	1812	1811	1810	1809	1808	1807	1806	1805	1804	1803	1802	1801	1800
1860	1859	1858	1857	1856	1855	1854	1853	1852	1851	1850	1849	1848	1847	1846	1845	1844	1843	1842	1841	1840	1839	1838	1837	1836	1835	1834	1833	1832	1831	1830	1829	1828	1827	1826	1825	1824	1823	1822	1821	1820	1819	1818	1817	1816	1815	1814	1813	1812	1811	1810	1809	1808	1807	1806	1805	1804	1803	1802	1801	1800
1860	1859	1858	1857	1856	1855	1854	1853	1852	1851	1850	1849	1848	1847	1846	1845	1844	1843	1842	1841	1840	1839	1838	1837	1836	1835	1834	1833	1832	1831	1830	1829	1828	1827	1826	1825	1824	1823	1822	1821	1820	1819	1818	1817	1816	1815	1814	1813	1812	1811	1810	1809	1808	1807	1806	1805	1804	1803	1802	1801	1800

LOTS	TYPE OF BURIAL	LOT SIZE	GRAVE SIZE	TOTAL LOTS	TOTAL GRAVES
1771-1860	UNCON. BABIES	5'x10(5 GR.)	24'x60"	98	485
1861-2148	UNCON. ADULTS	6'x9(2 GR.)	3'x9'	288	576
2157-2168	FOETUS	5'x15(30 GR.)	12'x30"	12	360
2169-2180	LIMBS	4'x15(10 GR.)	18'x48"	12	120
2181-2588	UNCON. ADULTS	6'x9(2 GR.)	3'x9'	448	928
				<b>TOTALS</b>	<b>853 2449</b>

NOTE:  
THE LOT NUMBER IS FOUND IN THE UPPER  
RIGHT HAND CORNER OF LOTS AS YOU FACE  
THE SECTION AND IS INDICATED THIS  
LOCATION OF GRAVE MARKERS SHOWN  
ARROW INDICATES DIRECTION GRAVE  
MARKERS WILL FACE.

HOLY CROSS CEMETERY  
CLEVELAND, OHIO  
SOUTH PART  
SECTION 13

Rev. 11-1-86  
Rev. 2-5-86  
SCALE 1"=20' G.C.A. MAR. 1963